

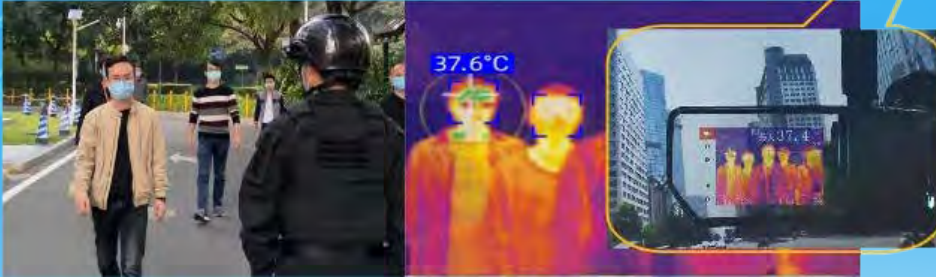
Helmet-Mounted Elevated Body Temperature (EBT) Fast Screener

Smart Risk Control Solution for COVID-19

N901 Smart IR Helmet



Smart IR Helmet
Model: N901



Features

- Real-time display of dynamic thermal imaging
- Automatic alarming for people with fever AR display and voice reminder
- Non-intrusive and non-contacting
- POCT type - Can be used anywhere, anytime, indoor and outdoor
- 6-8 hours battery power*
- Safe to use - No direct contact between Operator and Subject
- Wearable detection device for risk control of outbreak
- AI technology based for fast-screening fever

Technical Specifications

Indicators	Specifications
Machine Weight	< 1200g
Alarm Alerting Distance	37.2°C: 0.6m; 37.5°C: 1.0m 38.0°C: 1.5m; 38.5°C: 2.0m 39.0°C: 2.5m; 39.5°C: 4.7m 40.0°C: 5.0m; 40.5°C: 7.0m
Margin of Error	+0.3°C within specified range (Indoor: Within 2m; Outdoor: Within 1m)
Battery Life*	Patrol screening mode: 8h; Checkpoint recording mode: 3h

Flexible hands-free application in many public space related scenarios both indoors and outdoors, using Checkpoint (active) or Patrol (passive) screening modes



Indoor Screening



Outdoor Screening



Patrol Screening

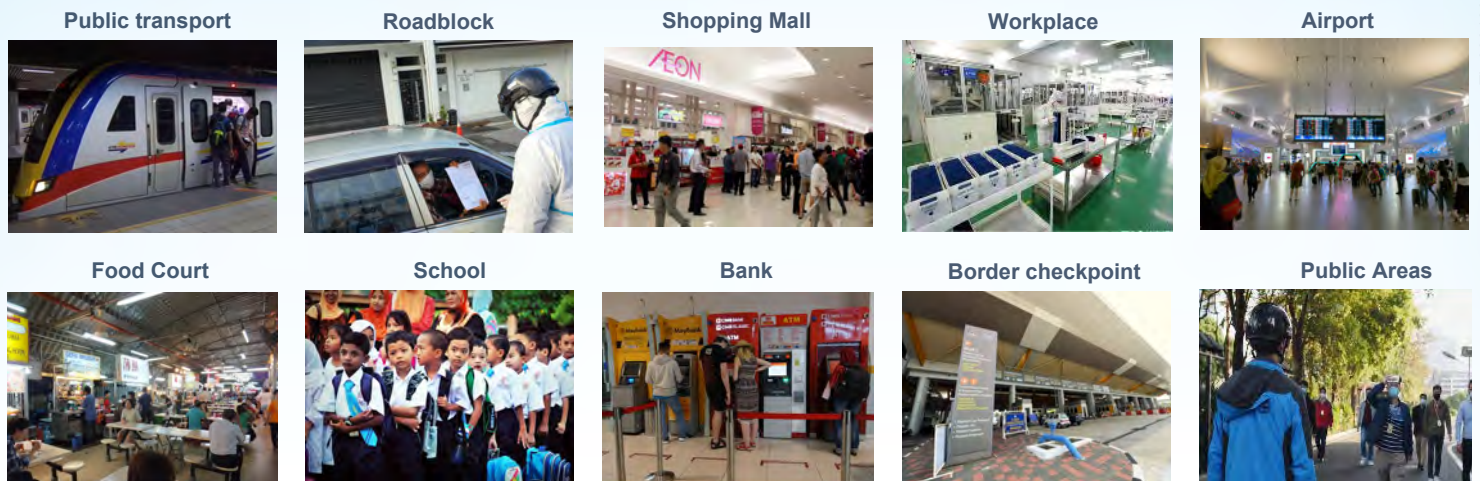


Checkpoint Screening

N901 Smart IR Helmet is more Efficient, Safer and Non-Intrusive Compared to Infrared Forehead Thermometer

Compare	N901 Smart IR Helmet	Handheld/Stationary Infrared Thermometer
Measurement Site: Indoors and Outdoors	<ul style="list-style-type: none"> Can be used both indoors and outdoors** (** Avoid direct sunlight when used outdoors) 	<ul style="list-style-type: none"> Mainly for indoor use
Deployment Environment	<ul style="list-style-type: none"> Perpetual measurement available anytime and anywhere Unlimited temperature measurements/subjects 	<ul style="list-style-type: none"> Can only be deployed at indoor checkpoints Single subject measurement each time (hand-held)
Set-up and Configuration	<ul style="list-style-type: none"> Easy-to-Perform: Minimal operator training Easy-to-Setup: No wires Mobile and Portable: Hands-free (helmet-mounted) flexible positioning wearable detection device Passive temperature monitoring with automatic alerts gives the operator freedom to conduct other simultaneous activities 	<ul style="list-style-type: none"> Non-portable: Power supply and internet connection are required (stationary) Complicated: Black body reference object needs to be installed /racks, peripherals, workbenches, foreground equipment and background computers are required (stationary)
Operator Requirements	<ul style="list-style-type: none"> Single Operator: Built-in AI assisted detection and records without additional workbench or at-site computer 	<ul style="list-style-type: none"> At least two people: On-site command, background monitoring, reading and recording
Working Mode(s)	<ul style="list-style-type: none"> Dual-mode screening: Checkpoints (stationary movement screening) and/or patrol screening (active movement screening) 	<ul style="list-style-type: none"> Screening at checkpoints/stationary screening position

Suggested Application Scenarios



About Kuang-Chi Company

Kuang-Chi was founded by five Duke and Oxford PHD scholars in 2010, focused on development and investment in different high technology industries such as telecommunications, aerospace, artificial intelligence, smart-city, and digital health. Under Kuang-Chi group, its subsidiary KuangChi Science is publicly-listed in Hong Kong while another subsidiary Kuang-Chi Technologies is listed in Shenzhen.

Kuang-Chi has heavy emphasis in creativity and innovation, emerging as a strong recognisable name in the manufacturing and supply of high-tech products and systems within China and globally.

Kuang-Chi group across its various subsidiaries have notable achievements within the areas of aerospace solutions through technology innovation and partnerships with notable global industry players, and implementation of smart-city systems and telecommunications in SEA.

Kuang-Chi has public and private subsidiaries, research facilities and investments across 21 countries with more than 2,600 in employment. Through continuous innovation and strategic acquiring of related technologies, Kuang-Chi aims to push forward its company vision of a high-technology society and continue retaining its position as market leader across different industries.

About TRANSLAB Company

Founded in 1984, Translab (M) Sdn Bhd actively imports and distributes a curated products, devices and systems to both public and private sectors in the area of medical, occupational safety & health, scientific, security, industrial, law enforcement, security, various non-governmental organisations and international agencies based in Malaysia.

Translab (M) Sdn Bhd is committed to be a preferred premium supplier and service provider in Malaysia for medical & diagnostics, laboratories, life science, law enforcement, safety & security, and general scientific equipment & devices.

In the medical division, Translab has a strong and successful record in dealing with POCT Point of Care Medical Diagnostic Testing especially at the primary care and public health discipline. All imported products (where needed) are duly registered and type approved by relevant Malaysian government agencies and regulatory bodies before they are sold in the market.

Translab is an ISO 9001 certified organisation in sales & service and a registered supplier with Ministry of Finance (Registration Ref No: 357-00015516). With its extensive sales & marketing infrastructure in all 14 States of Malaysia and Singapore (selected specialised laboratory equipment only), complete after-sale service support, PPM, repair, calibration and application training, Translab has become one of the established names with a long presence (over 36 years) of proven track records.